

School Charter
**Rangitaiki
School**

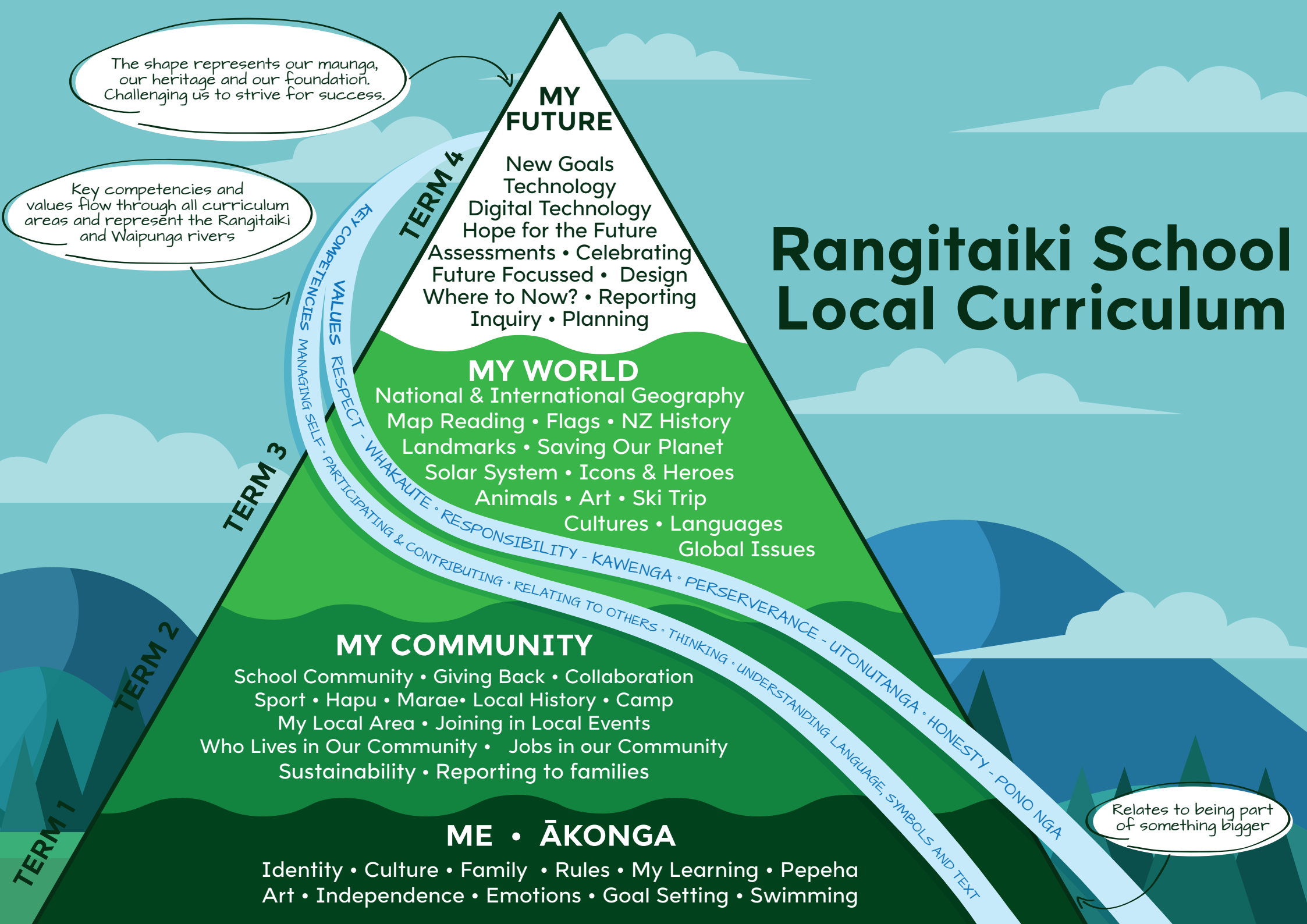
2024



Rangitaiki School

*He Iwitahi e mahi ana
Working together as one*

Rangitaiki School Local Curriculum



The shape represents our maunga, our heritage and our foundation. Challenging us to strive for success.

Key competencies and values flow through all curriculum areas and represent the Rangitaiki and Waipunga rivers

MY FUTURE

TERM 4
New Goals
Technology
Digital Technology
Hope for the Future
Assessments • Celebrating
Future Focussed • Design
Where to Now? • Reporting
Inquiry • Planning

MY WORLD

National & International Geography
Map Reading • Flags • NZ History
Landmarks • Saving Our Planet
Solar System • Icons & Heroes
Animals • Art • Ski Trip
Cultures • Languages
Global Issues

MY COMMUNITY

School Community • Giving Back • Collaboration
Sport • Hapu • Marae • Local History • Camp
My Local Area • Joining in Local Events
Who Lives in Our Community • Jobs in our Community
Sustainability • Reporting to families

ME • ĀKONGA

Identity • Culture • Family • Rules • My Learning • Pepeha
Art • Independence • Emotions • Goal Setting • Swimming

VALUES
RESPECT • PARTICIPATING & CONTRIBUTING • RELATING TO OTHERS • THINKING • UNDERSTANDING LANGUAGE, SYMBOLS AND TEXT
KEY COMPETENCIES
MANAGING SELF • WHAKAUTE • RESPONSIBILITY • KAWENGA • PERSERVERANCE • UTONUTANGA • HONESTY • PONO NGA

Relates to being part of something bigger

Strategic Intentions

Purpose	To provide accessible education to foster lifelong learning	
Values	Respect - Whaka ute Responsibility - Kawa-nga Perseverance - U tonu tanga Honesty - Pono nga	
Principles	<p>Rangitaiki School culture that:</p> <ul style="list-style-type: none"> ● Ensures that every child succeeds to the best of their ability ● Promotes a safe and secure environment ● Creates a school that is future focussed ● Fulfils the intent of the Treaty of Waitangi by valuing and reflecting New Zealand's dual cultural heritage as well as valuing cultural diversity of all learners ● Gives children opportunities and experiences within and outside the school environment 	<ul style="list-style-type: none"> ● Interacts with its community and encourages involvement ● Provides programmes meeting the National Curriculum Statements and reflects the unique local environment ● Teaches skills, which encourage good citizenship and the ability to interact with others ● Will provide a positive co-operative and supportive environment
Māori dimensions and Cultural Diversity	<p>Rangitaiki School will develop procedures and practices that reflect New Zealand's cultural diversity. Rangitaiki School will take all reasonable steps to provide instruction in Tikanga (Maori culture) and Te reo Maori (Maori language) for students who identify as Maori on the school roll.</p> <p>To achieve this, the school will:</p> <ul style="list-style-type: none"> ● Incorporate elements of tikanga and te reo into units of work across all areas of the curriculum ● Use everyday greetings from the Maori language, sign language and other languages of students at our school 	<ul style="list-style-type: none"> ● Provide a culturally responsive education ● Use te reo classroom and playground instructions ● Learn about other cultures as part of our school inquiry ● Ensure there are adequate resources to support learning about other cultures ● Link in with Tuwharetoa and other agencies in Taupo to further support Maori culture in our school (through the Tuwharetoa Kawenata and the COL) ● Have regular contact with local Maori advisors in the education department or locally
Motto	<i>He Iwitahi e mahi ana. Working together as one.</i>	

Strategic Aims 2024

Goal	How	Leadership	Success Measures
<p>Teaching and Learning</p> <p>NELP 1 Learners at the centre NELP 3 Quality teaching and Learning</p> <p>Support and develop all students and staff to grow as successful learners</p>	<p>Out of school trips- Connecting learning to the world around them</p> <p>Inquiry Learning- Enhance authentic experiences</p> <p>Ask questions and investigate topics of interest Structured Literacy approach to reading and writing. - use the IDEaL platform.</p> <p>Qulatiy PLD for staff in digital technology .</p> <p>Raising accademic results for individual students to reach thier level of learning potential.in Math - Look into Math programs</p>	<p>* Principal</p> <p>*Teacher</p> <p>* Across school teachers</p> <p>* RTLB</p>	<p>Our teachers identify and respond to all tamariki 's needs and strengths to support their progress</p>
<p>Type text here</p> <p>Culture and Identity</p> <p>NELP 3 Quality teaching and learning Te reo te ao Maori Sign Language Tuwharetoa aspirations</p>	<p>Embrace the identity,language and culture of studetns ,staff and whanau of our school community.</p> <p>Enter the Tuwharetoa festival in 2024</p> <p>Find a kapahaka tutor.</p> <p>Continue with sign-language daily .</p>	<p>Learning support Across school leaders Teachers Principal Teacher aide NZSL support team</p>	<p>Our tamariki engage in a curriculum that reflects the uniqueness of our story, our people and our place.</p>
<p>Hauora- Wellbeing</p> <p>NELP 2 Barrier free access Create a physically and environmentally safe place for all</p>	<p>New playground for students.</p> <p>Maintenance in school grounds and buildings</p> <p>Teach resilience and relationships skills to strengthen the wellbeing and relationships with others.</p> <p>Incorporate the Rongahia te hau program into Rangitaiki School to create a Cutural responsive school.</p> <p>Principal on Sabbatical for Term 1</p>	<p>Teachers Learning support co-ordinators Across school leaders RTLB Prinicpal</p>	<p>Our students,staff and whanau are happy, healthy and feel supported in our kura.</p>



Rangitaiki School

He Iwitahi e mahi ana
Working together as one

Rangitaiki School Strategic Plan 2021-2023

VISION : to provide accessible education to foster lifelong learning

School Values

Learners that reflect the values of :

- Respect – Whaka ute
- Responsibility – Kawe-nga
- Perseverance – U tonu tanga
- Honesty – Pono nga

STRATEGIC GOALS

2021

2022

2023

SUCCESS

1

Develop a locally and culturally responsive school culture

First full year using local curriculum. Gain feedback. Develop reo maori, me ono tikanga and integrate into curriculum

Continue to develop staff knowledge of culturally responsive relationships

Consult with parents / staff / community on direction and trial changes

Students and whanau believe their culture is embraced and celebrated while at Rangitaiki School

2

Whanau are invested in the success of our learners

Establish and reconnecting relationships with our wider community

Develop an understanding about whanau. Want to be engaged in their child's learning

Grow whanau and student engagement through greater ownership of learning

High trust, authentic relationships established through mutual respect and partnership

3

Teachers / staff up to date with "best practice" to meet learning needs

Develop programme of professional development around school / learners' needs

Continue with PLD programme, adding and changing as needed

Measure quality of relevance of PLD to practice

Quality learning achieved through consistency of practice and up to date programmes and systems

4

Create a well-maintained environment that maximises our rural aspect and uses the outside space as part of the learning curriculum

10-year property plan updated. House and flat property plan. Visit 3 schools for ideas. Use outdoor areas for curriculum classrooms, i.e. Loose part play, STEAM Technology, Oral language

School 10-year and 5-year property plans in place. Well thought out/consulted improvements. Decide on new initiatives for outside areas

School implementing new initiatives and gaining feedback

An environment that maximises learning potential, Students that learn hands-on, inside and outside the classroom

WHAT

HOW

HOW

HOW